

## Section 1: Material List

Wooden Trinket	(Giver: Hyacinth The Assistant, Receiver: Walloc The Carpenter)
• 1k Grade A Boards	(Sturdy Axe)
• 10k Ebony Boards	(Lumberjacking)
• 250 Bark Fragments	(Lumberjacking)
• 25 Parasitic Plants	(Lumberjacking)
• Lurker Canine	(Alpha Male Lurker)
Gleam Material	(Giver: Thomas The Apprentice, Receiver: Artemis The Blacksmith)
• 7k Electrum Ingots	(Mining)
• 3k Copper Ingots	(Mining)
• 7k Verite Ingots	(Mining)
• 2 Gleam Essences	(A Penumbrus Gleam)
Shadow Material	(Giver: Thomas The Apprentice, Receiver: Artemis The Blacksmith)
• 5k Shadow Ingots	(Mining)
• 5k Dull Copper Ingots	(Mining)
• 7k Agapite Ingots	(Mining)
• 2 Shadow Essences	(A Shadow)
Unimbued Armor	(Giver: Ravi The Assistant, Receiver: Fenerrus The Tailor)
• 5k Spined Leather	(Giant Snakes)
• 5k Horned Leather	(Wyvern/Drakes/ Shadow Wyrms)
• 5k Barbed Leather	(Dragon)
• 300 Black Scales	(Shadow Wyrms)
• Mystic Fabric	(Ximestis)
Archmage Imbuement	(Giver: Violet The Apprentice, Receiver: Leifang The Archmage)
• Soulwood Talisman	(Wooden Trinket Quest)
• Malleable Gleam Material	(Gleam Material Quest)
• Malleable Shadow Material	(Shadow Material Quest)
• Unimbued Leggings	(Unimbued Armor Quest)
• Fallen Angel Down	(Rindial The Deceiver)

## Section 2: Castle Puzzle Key

Green Onyx  
Blue Pearl  
Red/Purple Sapphire  
Yellow Diamond  
Red Emerald  
Green/Yellow Ruby

### Section 3: How to Get to Sgail



Figure 1: Felucca Entrance Route



Figure 2: Sgail Entrance Route



Figure 3: Sgail Entrance

To cross the gap. Say, "I wish to cross."

### Section 3: Insta kill Monsters



Figure 4: Umbris Juggernaut (650+ damage)



Figure 5: Assassin (1200+ damage)

All monsters, except for one, are killable in Sgail. The one mob that is not killable, just prevents players from boating in. There is always some technique that makes killing the mobs easier. In both cases, shown above, the mobs do exclusively melee damage. Meaning they are exceptionally prone to kiting.

## Section 4: Quests

### Section 4.1: Wooden Trinket Quest



Figure 6: Hyacinth The Assistant and Walloc The Carpenter



Figure 7: Wooden Trinket NPC Route

Quest Giver: Hyacinth The Assistant, Quest Receiver: Walloc The Carpenter

- 1k Grade A Boards (Sturdy Axe)
- 10k Ebony Boards (Lumberjacking)
- 250 Bark Fragments (Lumberjacking)
- 25 Parasitic Plants (Lumberjacking)
- Lurker Canine (Alpha Male Lurker)



Figure 8: Alpha Male Lurker



Figure 9: Lurker Canine



Figure 10: Alpha Male Lurker Region Route

The Alpha Male Lurker spawns once every 30 minutes or so. It rarely has its canine.



## Section 4.2: Gleam and Shadow Material Quest

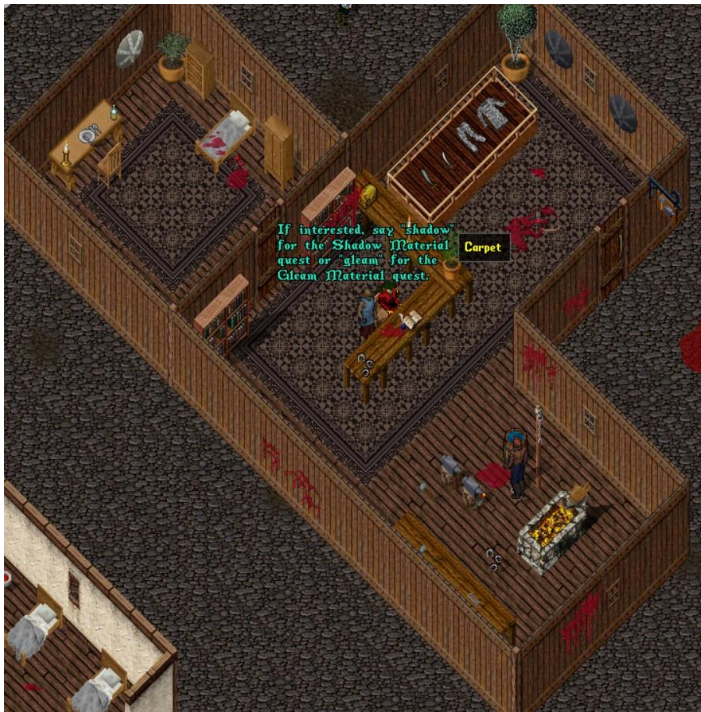


Figure 11: Thomas The Apprentice and Artemis The Blacksmith



Figure 12: Gleam and Shadow Material NPC Route

Gleam Material Quest Giver: Thomas The Apprentice, Quest Receiver: Artemis The Blacksmith

- 7k Electrum Ingots (Mining)
- 3k Copper Ingots (Mining)
- 7k Verite Ingots (Mining)
- 2 Gleam Essences (A Penumbra Gleam)

Shadow Material Quest Giver: Thomas The Apprentice, Quest Receiver: Artemis The Blacksmith

- 5k Shadow Ingots (Mining)
- 5k Dull Copper Ingots (Mining)
- 7k Agapite Ingots (Mining)
- 2 Shadow Essences (A Shadow)



Figure 13: Penumbra Gleam



Figure 14: Gleam Essence



Figure 15: Shadow



Figure 16: Shadow Essences

Both Penumbra Gleam and Shadows can be found all over the island.

### Section 4.3: Unimbued Armor Quest

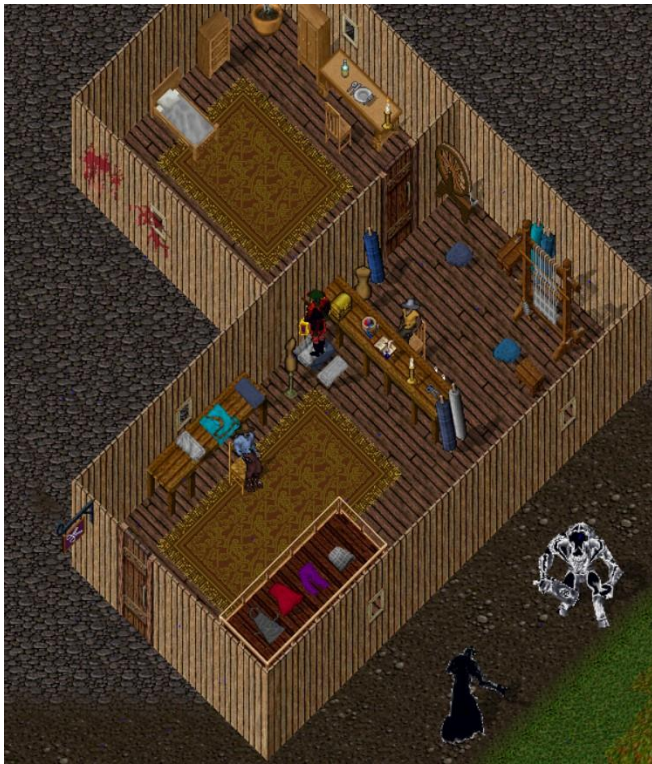


Figure 17: Ravi The Assistant and Fenerrus The Tailor



Figure 18: Unimbued Armor NPC Route

Quest Giver: Ravi The Assistant, Quest Receiver: Fenerrus The Tailor

- 5k Spined Leather (Giant Snakes)
- 5k Horned Leather (Wyvern/Drakes/ Shadow Wyrn)
- 5k Barbed Leather (Dragon)
- 300 Black Scales (Shadow Wyrn)
- Mystic Fabric (Ximestis)

#### Section 4.3.1: Getting to Ximestis

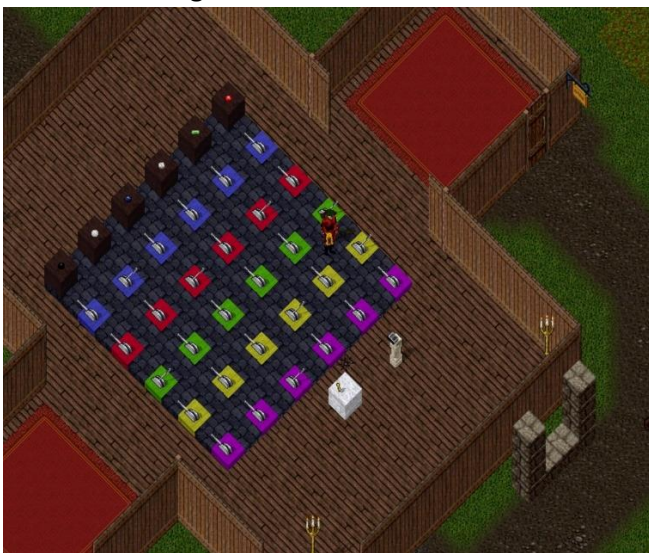


Figure 19: Solved Puzzle Room



Figure 20: Puzzle Room Route

Grab the castle key, you will need it to get into the castle.





Figure 21: Drawbridge Lever



Figure 22: Drawbridge Lever Route



Figure 23: Front Gate



Figure 24: Front Gate Route

If you are doing this alone, like I did, you will need to run like heck. Consider watching [the video](#) for a demonstration. Once you are there, you will need to kill the energy sources for the gates. Note the circles on figure 23. Volcanic Eruption seems to be the most effective. Additionally, be careful of the overhanging pathways, the mobs below (especially the minotaur) can hit you from beneath. Do not linger outside the castle.



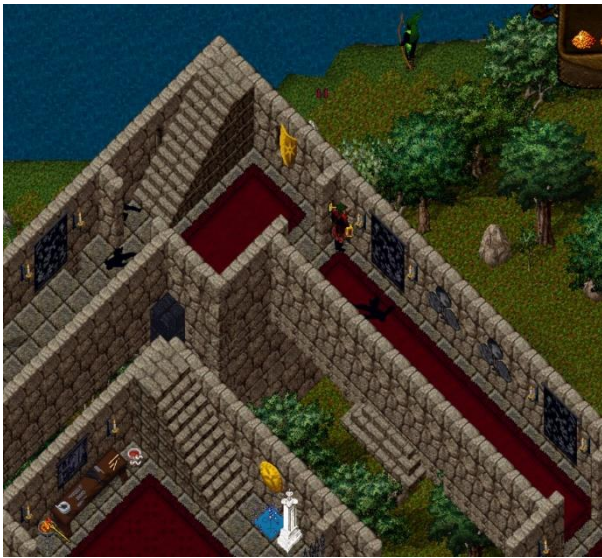


Figure 25: First Lever



Figure 26: First Lever Route



Figure 27: Blue Key



Figure 28: Blue Key Route



Figure 29: Leifang's Key



Figure 30: Leifang's Key Route

The Shattered Skull Prison Key is required to turn in the Archmage Imbuement Quest.





Figure 31: Blue Door



Figure 32: Blue Door Route



Figure 33: White Switch



Figure 34: Top of Castle



Figure 35: Top of Castle Route

Do not fall off.



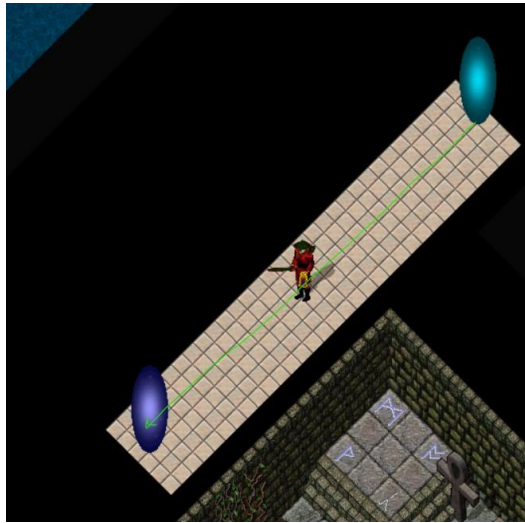


Figure 36: Dungeon Entry Segway



Figure 37: Ximestis Key



Figure 38: Ximestis Key Route

You will need the key to open the room that contains some of the tiles for the tile combination lock on the green door.



Figure 39: Green Door Combination



Figure 40: Blue Dungeon Lever



Figure 41: Blue Dungeon Lever Route



Figure 42: Ximestis Boss Room Key



Figure 43: Blue Dungeon Door Route

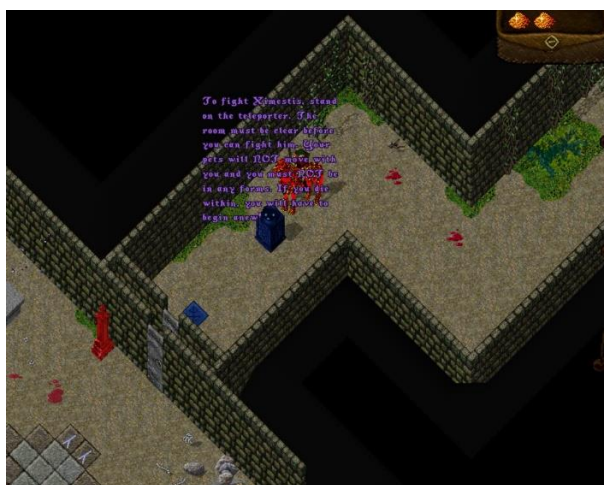


Figure 44: Ximestis Boss Room

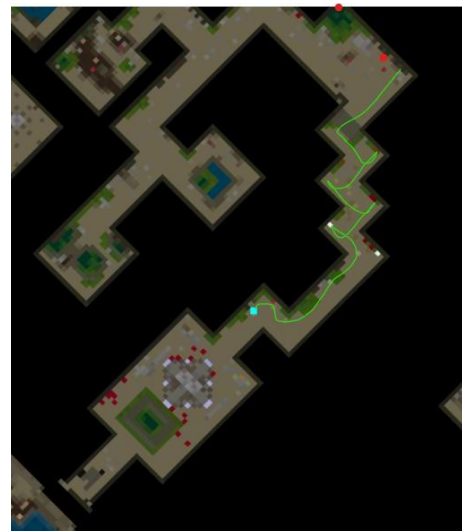


Figure 45: Ximestis Boss Room Route and Assassin Locations

The best strategy time wise, is to kite the mino and the assassins, past the blue door, and then move in this pattern to the boss room. There are short walls which allow the archers to shoot at you, you want to take them out while you are taking the other mobs out.





Figure 46: Ximestis's Layer



Figure 47: Exit Room

Do not leave the room until you have the fabric, otherwise you will have to start the castle run all over again. Ximestis will move once his health gets low. If there is one in location 1 when you start, he must have been from before. His first appearance is at location 2 and later at location 3. To exit, say "leave".

#### Section 4.4: Archmage Imbuement



Figure 48: Violet The Apprentice



Figure 49: Violet The Apprentice Route



Figure 50: Leifang The Archmage



Figure 51: Leifang The Archmage Route

Quest Giver: Violet The Apprentice, Quest Receiver: Leifang The Archmage

- Soulwood Talisman (Wooden Trinket Quest)
- Malleable Gleam Material (Gleam Material Quest)
- Malleable Shadow Material (Shadow Material Quest)
- Unimbued Leggings (Unimbued Armor Quest)
- Fallen Angel Down (Rindial The Deceiver)



Figure 52: Rindial The Deceiver



Figure 53: Fallen Angel Down



Figure 54: Rindial Tile Locations



Figure 55: Tile 1



Figure 56: Tile 2



Figure 57: Tile 3



Figure 58: Tile 4